



Atos Hatchback

Class B

NEW AUTOMATIC MANUAL TRANSMISSION (AMT)

***\$21,995**

ANNUAL TCD Fee
\$401.08

SENIORS Fee
\$197.10

RUST PROOFING
\$595

ANNUAL RUST PROOFING INSPECTION
\$195

WARRANTY
5 Years / 62,137 Miles



Bermuda's First Self-Service Automated Car Wash!

Hours of Operation: Monday – Saturday 8am – 6pm

Download the Touch4Wash app from the Apple App Store or Google Play Store and sign up now

*PRICING SUBJECT TO CHANGE PER SHIPMENT

| Mon - Fri: 8am - 5pm

| Sat: 9am - 1pm

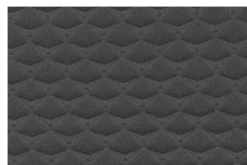
**FEATURES

- Model Year 2020
- Epsilon 1.1L MPI Gasoline Engine
- Euro 3 Emission Level
- 5-Speed **Automatic Manual Transmission** (AMT)
- Driver & Passenger Air Bags
- Anti-lock Braking System + Electronic Stability Control + Hill Assist Control
- Child Anchor (Rear - Upper & Lower)
- ISO FIX Child Anchor (Rear)
- 14" Steel Wheel With Full Size Wheel Cover
- Spare Wheel & Tyre
- Front Fog Lamps
- Side Repeater Outside Mirrors
- Body Color Outside Mirrors
- Power, Heated Outside Mirrors + Rear Washer & Wiper
- Chrome Coated Radiator Grille
- Body Coloured Bumpers
- Body Coloured Outside Door Handles
- Up/Down Headrests (Front, Rear Left & Right, Centre)
- High Mounted Stop Lamp
- Rear View Monitor with Parking Guidance
- Black Cloth + PVC Seats
- Bench Folding Rear Seat for 3 Passengers
- 3-Spoke Steering Wheel (Polyurethane)
- Power Window Controls (Front & Rear)
- Metal Paint Inside Door Handles
- Vanity Mirror (Passenger Side)
- Rear Parcel Tray/Shelf Covering
- Keyless Entry
- Immobilizer
- Central Door Lock (Driver's Control)
- Full Audio Package (7" Touchscreen) + Facia Garnish Paint + +Steering Audio Control
- Speakers x 2 (Front & Rear Door)
- Steering Wheel Audio Remote Control
- Bluetooth With Voice Recognition
- Day & Night Inside Rear View Mirror
- Digital Clock
- Rear Parking Assist System
- Power Outlet: Front
- Mud Guards (Front & Rear)
- Air Conditioning (Manual)
- Rear Air Vent

AVAILABLE COLOURS

Polar White	Fiery Red
Typhoon Silver	Marina Blue
Star Dust	Imperial Beige
Flame Orange	

Seat Pattern



****ALL VEHICLES SUPPLIED INCLUDES BERMUDA SPECIFICATIONS**

| Mon - Fri: 8am - 5pm

| Sat: 9am - 1pm